

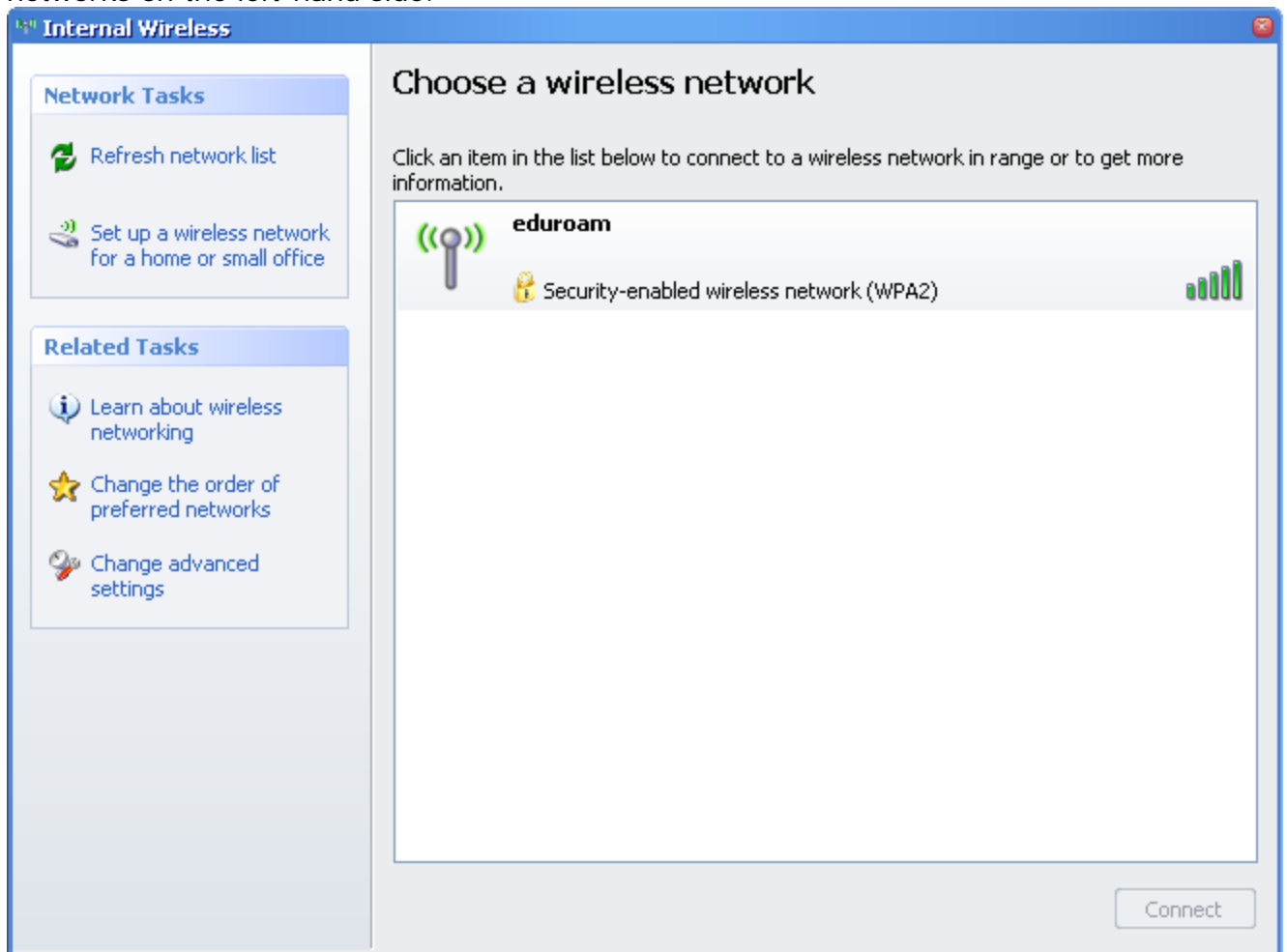


# Windows XP Howto

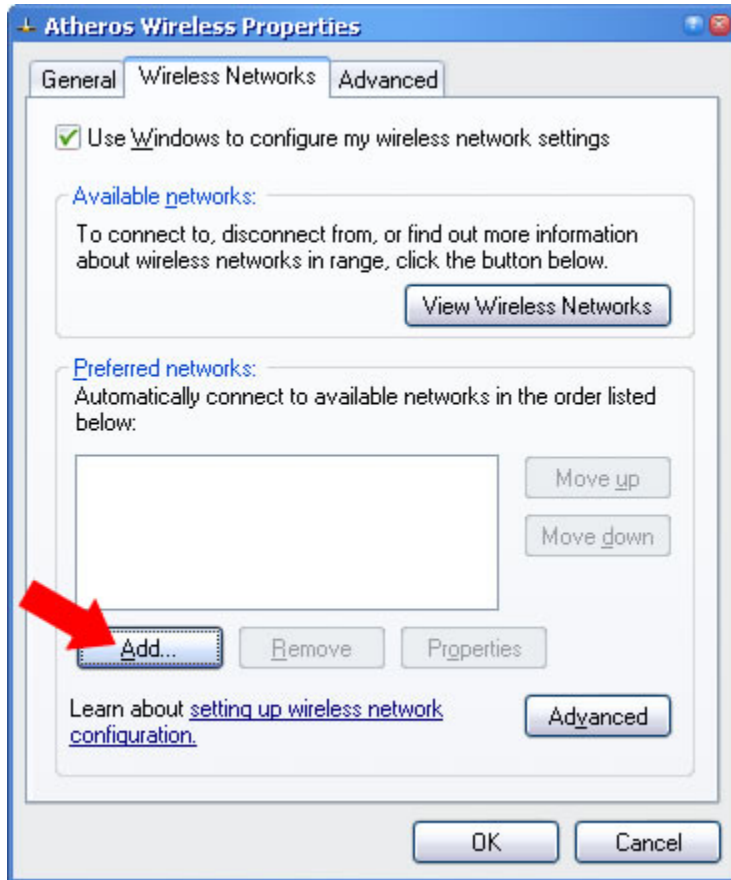
To join the eduroam network from Windows XP you must first setup your preferred networks to use the correct encryption settings for your home institution.

## Setting up the Windows Network Manager for Windows XP

From the view available wireless networks window click Change the order of preferred networks on the left-hand side.



Click the Add button under "Preferred networks".



In the Association tab make sure your settings are as below. Verify that the Network name (SSID) is set to eduroam, Network Authentication is set to WPA2, and Data

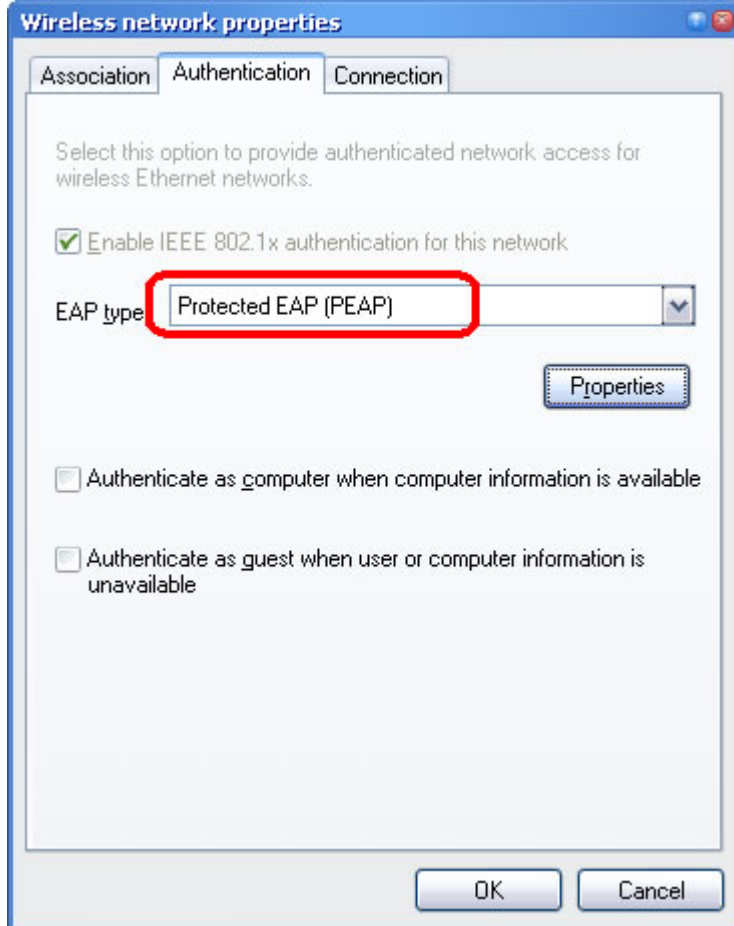
Encryption is set to AES.

The image shows a Windows-style dialog box titled "Wireless network properties". It has three tabs: "Association", "Authentication", and "Connection". The "Authentication" tab is selected. Inside the dialog, there are several fields and checkboxes:

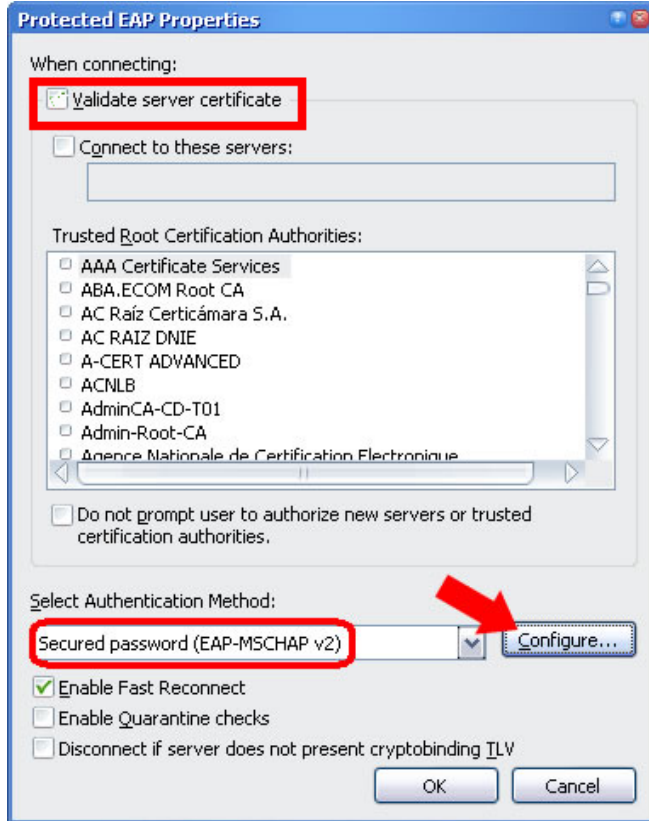
- Network name (SSID):** A text box containing "eduroam".
- Connect even if this network is not broadcasting**
- Wireless network key:** A section header.
- This network requires a key for the following:**
- Network Authentication:** A dropdown menu set to "WPA2".
- Data encryption:** A dropdown menu set to "AES".
- Network key:** An empty text box.
- Confirm network key:** An empty text box.
- Key index (advanced):** A spinner box set to "1".
- The key is provided for me automatically**
- This is a computer-to-computer (ad hoc) network; wireless access points are not used**

At the bottom of the dialog are two buttons: "OK" and "Cancel".

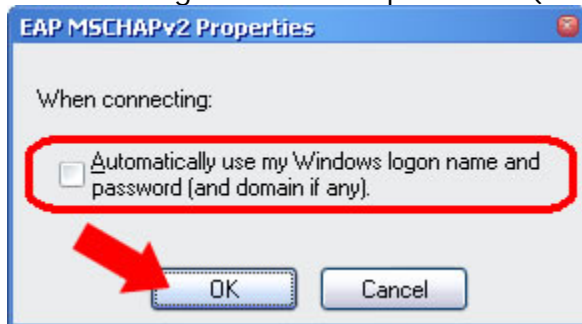
Select the Authentication tab. Make your settings are as below. Verify that EAP type is set to Protected EAP (PEAP).



Click Properties button then uncheck Validate server certificate and verify that the Select Authentication Method box is set to Secured password (EAP-MSCHAP v2).



Click the Configure button. Uncheck the check box labeled Automatically use my Windows Logon name and password (and domain if any).



Click the OK button on all of the windows.

Join the network called "eduroam" and when prompted provide your credentials in the form of snumber@smunet.smu.ca where snumber is your unique SMU issued S number account. Your password is your normal password you use with the S number account.