



Windows 7 Howto

Windows 7 Howto

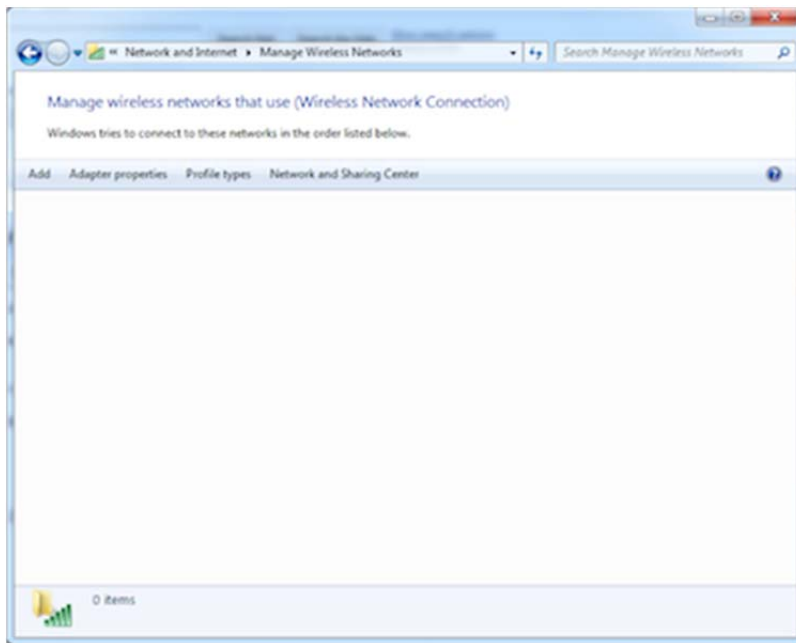
To join the eduroam network from Windows 7 you must first setup your preferred networks to use the correct encryption settings for your home institution.

Setting up the Network and Sharing Center for Windows 7

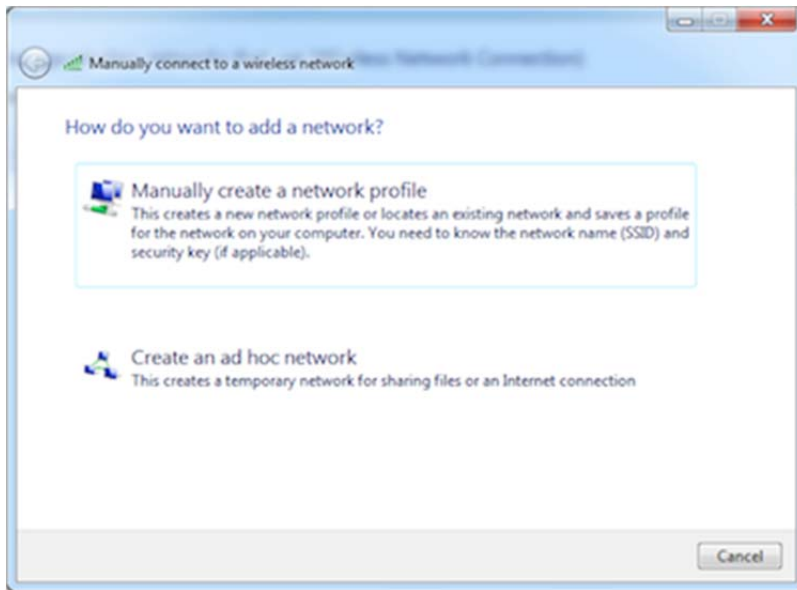


Right click the network icon on the lower right side of the screen and then click Open Network and Sharing Center.

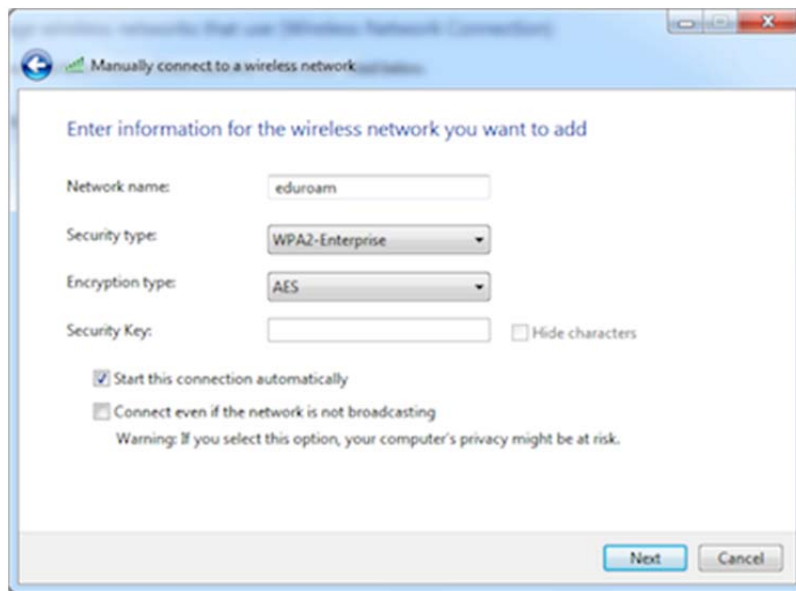
Click Manage wireless networks.



Click "add" then click "Manually connect to a wireless network."

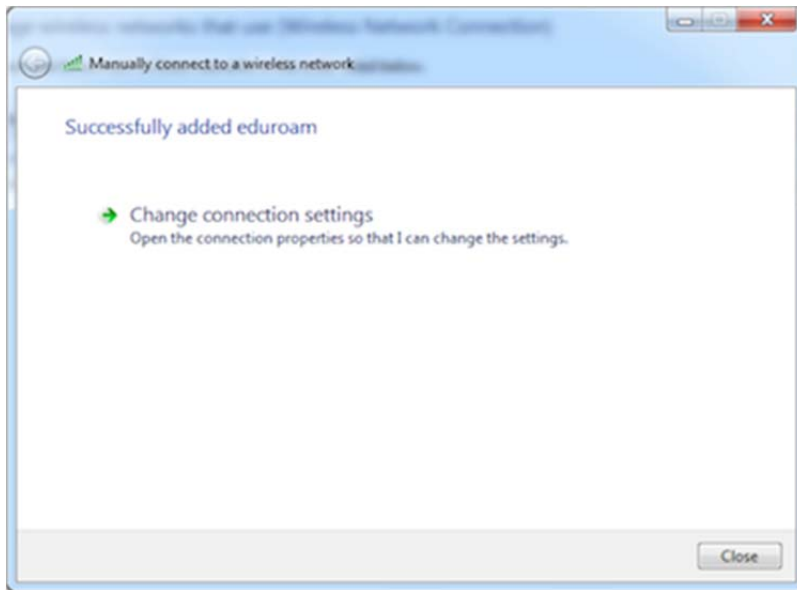


Click "Manually create a network profile" and populate the information as shown below.

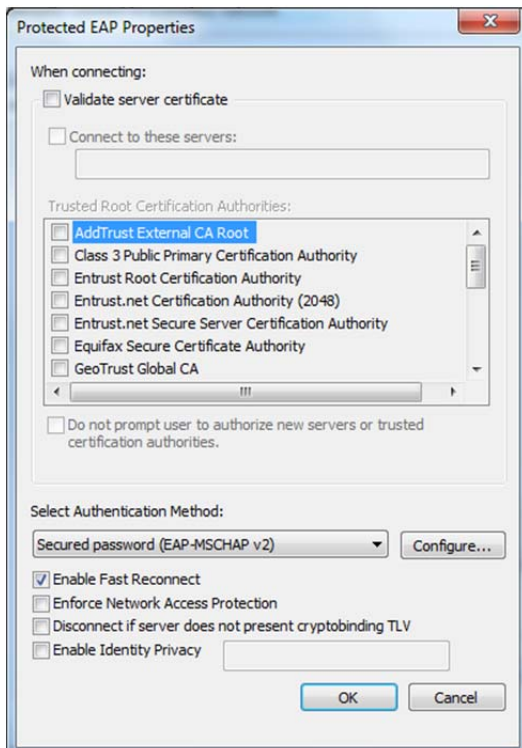


Network name should be entered as eduroam. Security Type is WPA2-Enterprise and Encryption is AES.

Click Next and you should see a Successfully added eduroam window.



Click "Change connection settings" and select the Security tab and then click "Settings" and uncheck the box to Validate server certificate. Verify that "Microsoft: Protected EAP (PEAP)" is selected in the drop-down menu labeled "Choose a network authentication method:"



Click the configure button next to the Select authentication method drop down box.
Uncheck "Automatically use my windows username and password" and click Ok.



Click Ok then click Ok again on the eduroam Wireless Network Properties window.

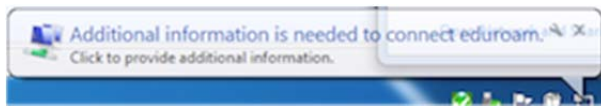
Close the Manage Wireless Networks window.



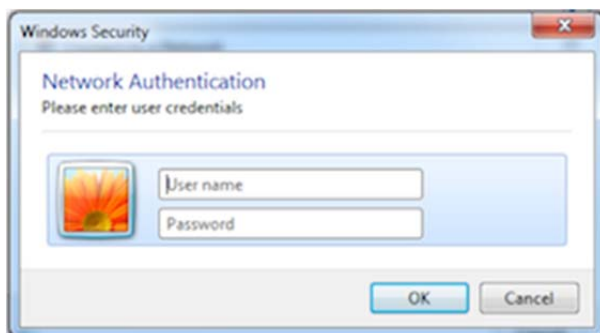
Click the network icon on the lower right hand side of the screen.

Click eduroam and click connect.

When you see the "additional information is needed to connect to eduroam" balloon click on it.



Join the network called "eduroam" and when prompted provide your credentials in the form of snumber@smunet.smu.ca where snumber is your unique SMU issued S number account. Your password is your normal password you use with the S number account.



Congratulations. You should now be connected to eduroam.