

Adding Library Wireless Printing to your Macintosh

For Mac OS 9 instructions see page 4

Mac OSX (10.2-10.4)

OS 10.2 – Jaguar

OS 10.3 – Panther

OS 10.4 – Tiger

To add a printer using Mac OS X Jaguar v10.2 and higher:

1. Log in to your computer as an Administrator.
2. On your desktop, double-click the **Macintosh HD** (Hard Disk) icon.
Shortcut: Try printing a document to open the Print Center, then go to Step 6.
A window appears, showing the contents of your hard drive.
3. Double-click the **Applications** folder (*refer to Figure 1*):



Applications

Figure 1. Applications.

4. Double-click the **Utilities** folder.
5. **For Jaguar:** Double-click the **Print Center** icon (*refer to Figure 2*):



Print Center

Figure 2. Print Center.

For Panther & Tiger: Double-click the **Printer Setup Utility** icon.
The Printer List window appears.

6. Click **Add**.
The Printer List dialog box appears.
7. **For Tiger:** To add a printer **use IP** (Internet Protocol) [*refer to Figure 4*]:
 - Click **IP Printer**:



IP Printer

Figure 3. IP Printer.

- From the **Protocol** pop-up menu, select **Line Printer Daemon - LPD**.
- In the **Address** field, enter **140.184.120.29** (*refer to Figure 4*).
- In the **Queue** field enter **library-web**.
- From the **Print Using** pop-up menu, select the printer model **HP**.
- Select HP Laserjet from the models listed.
- Click **Add**.

- Select your printer's options from the list, then click **Continue**.

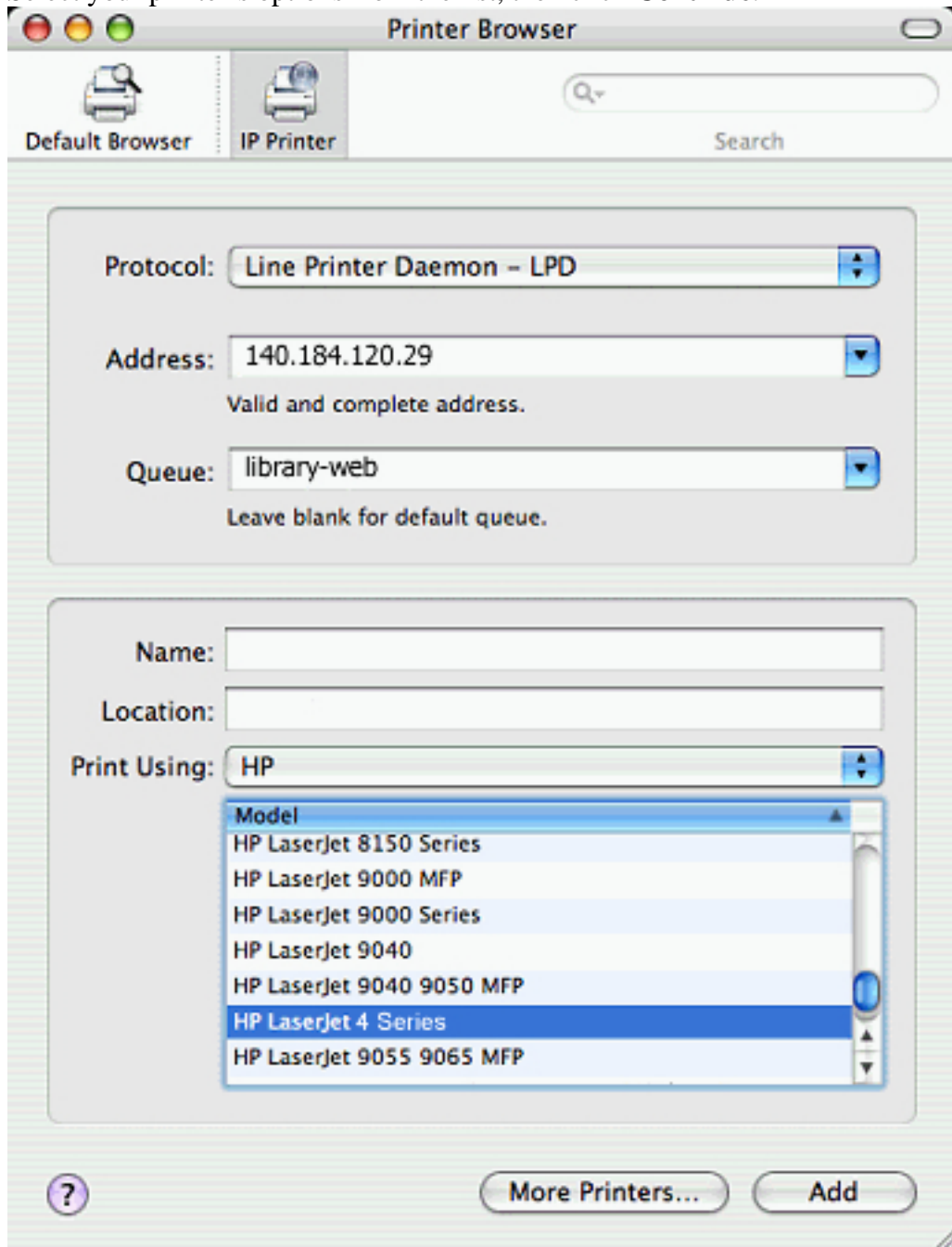


Figure 4. Printer Browser.

8. **For Jaguar & Panther:** To add a printer using IP (Internet Protocol) [refer to Figure 5]:
 - Select **IP Printing** from the pop-up menu.
 - In the **Printer's Address** box, enter **140.184.120.29** (refer to Figure 5).
 - Enter **library-web** as the **Queue Name**.
 - Select the **HP** as the **Printer Model** from the pop-up menu.
 - In **Model Name** select **HP LaserJet 4 Series**.
 - Click **Add**.

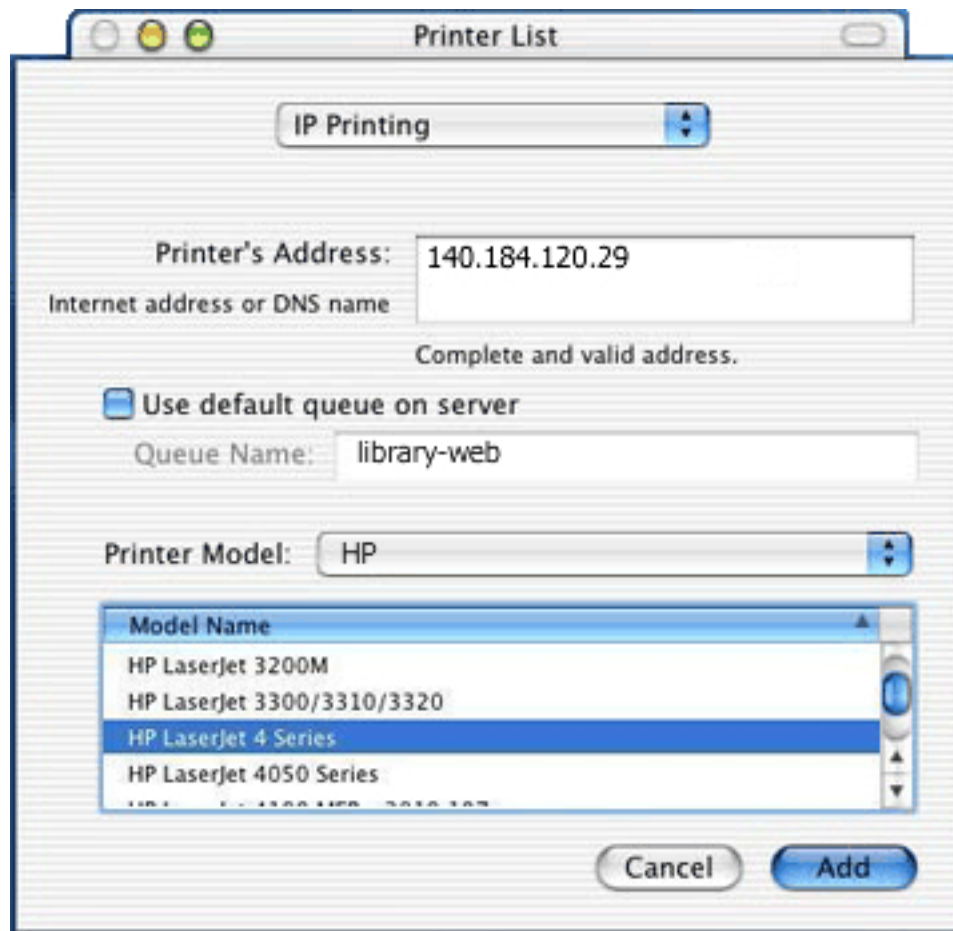


Figure 5. Printer List.

9. Once you finish setting up all your printers, the Printer List window appears with all the names of the printers you added. Your default printer is listed in bold text .
10. To change your default printer, click the printer you want as your default printer and click **Make Default**.

MAC OS 9

To add a printer for Mac OS 9.x:

1. From the File menu, select **Find**.
Sherlock opens.
2. Search for the following: **desktop printer utility**
3. Once you find the Desktop Printer Utility, double-click the name to open it.
The Desktop Printer Utility opens (*refer to Figure 1 below*).

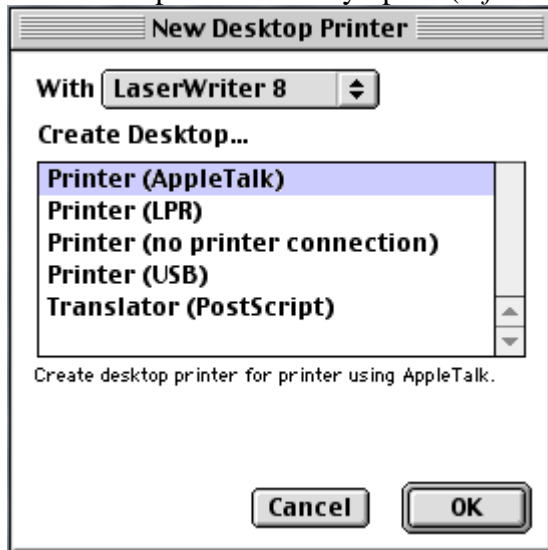


Figure 1: Desktop Printer Utility.

4. Do the following:
 - o From the **With** drop-down list, select **LaserWriter 8**.
 - o From the Create Desktop choices, select **Printer (LPR)**.
 - o Click **OK**.

The following window appears (refer to Figure 2).

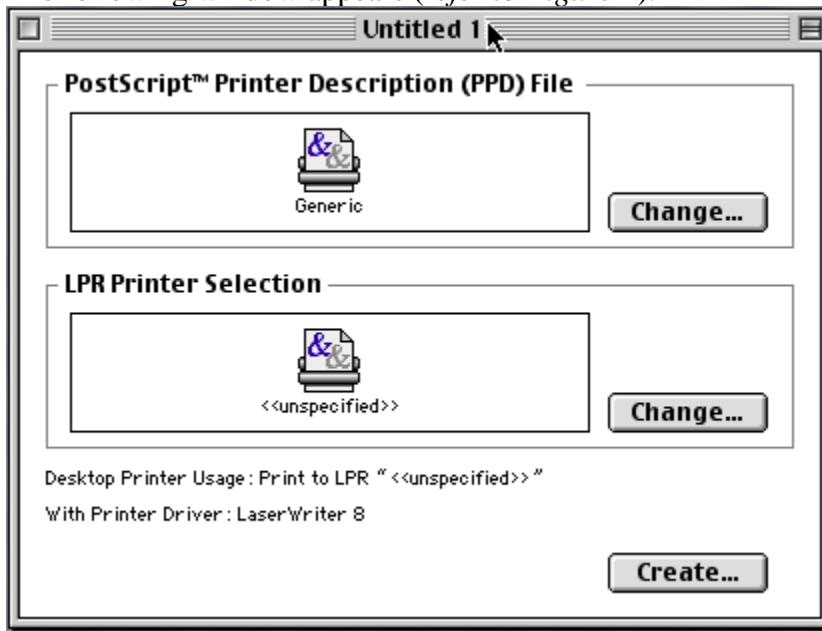


Figure 2: Setting up an OS 9 printer.

- Under the PostScript Printer Description (PPD) File section, click **Change**. The following window appears (refer to Figure 3).

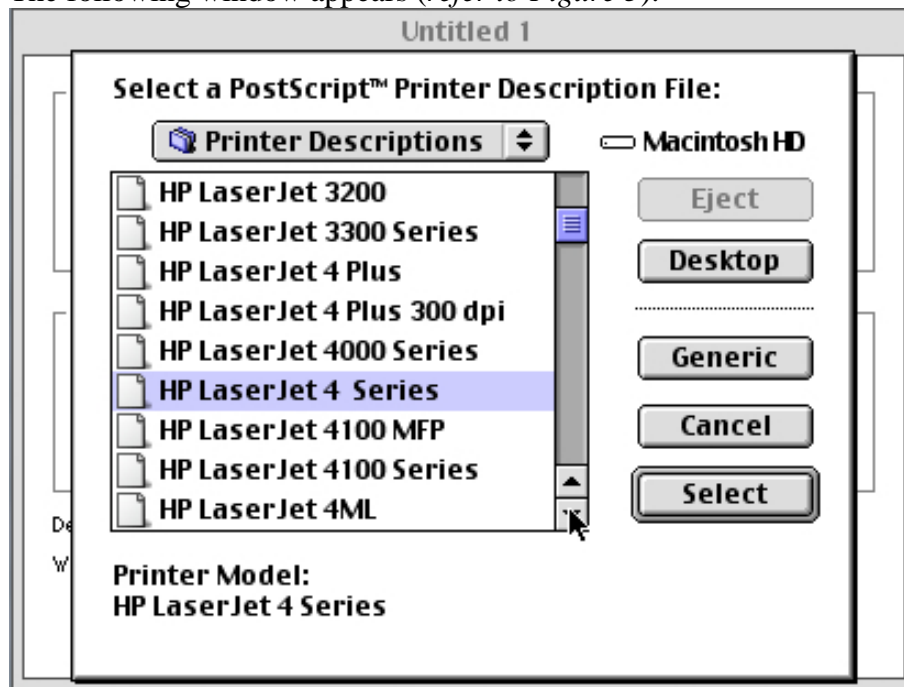


Figure 3: Select a PostScript Printer File Description File.

- Scroll through the list of printers and click on **HP Laserjet 4 Series**, then click **Select**.
- Under the LPR Printer Selection section, click **Change**. The Internet Printer window appears (refer to Figure 4).
- In the **Printer Address** box, enter the printer name followed by **140.184.120.29** (refer to Figure 4). In the Queue box, enter **library-web**.



Figure 4: Internet Printer window.

9. On the Internet Printer window, click **OK**.
10. Click **Create**. You are prompted to save the desktop printer.
11. In the Save desktop printer as box, enter a name for the desktop printer and click **Save**. A printer icon appears on your desktop.